

2026.5.18~41ft



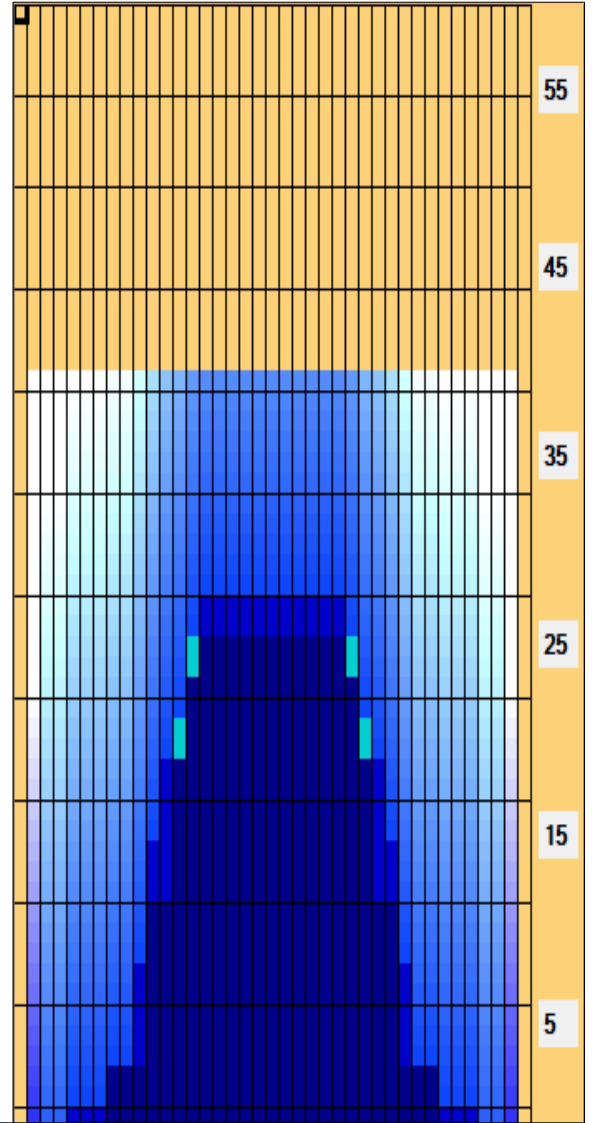
Oil Pattern Distance: 41 Feet **Reverse Brush Drop:** 41 Feet **Oil Per Board:** 50 uL
Forward Oil Total: 12.9 mL **Reverse Oil Total:** 8.85 mL **Volume Oil Total:** 21.75 mL
Forward Boards Crossed: 258 Boards **Reverse Boards Crossed:** 177 Boards **Total Boards Crossed:** 435 Boards

Start	Stop	Loads	Speed	Crossed	Start	End	Feet	T.Oil
1	3L 3R	1	10	35	0.0	0.0	0.0	1750
2	6L 6R	2	14	58	0.0	3.9	3.9	2900
3	8L 8R	2	14	50	3.9	7.8	3.9	2500
4	11L 11R	3	18	57	7.8	15.4	7.6	2850
5	13L 13R	3	22	45	15.4	24.7	9.3	2250
6	14L 14R	1	26	13	24.7	28.3	3.6	650
7	2L 2R	0	14	0	28.3	41.0	12.7	0

Start	Stop	Loads	Speed	Crossed	Start	End	Feet	T.Oil
1	2L 2R	0	30	0	41.0	30.0	-11.0	0
2	15L 15R	1	30	11	30.0	25.8	-4.2	550
3	14L 14R	1	30	13	25.8	21.6	-4.2	650
4	12L 12R	1	26	17	21.6	18.0	-3.6	850
5	11L 11R	2	22	38	18.0	11.8	-6.2	1900
6	10L 10R	2	18	42	11.8	6.7	-5.1	2100
7	8L 8R	1	14	25	6.7	4.8	-1.9	1250
8	5L 5R	1	10	31	4.8	3.4	-1.4	1550
9	2L 2R	0	10	0	3.4	0.0	-3.4	0

Conditioner:
 Type In or Select One
 TransferType:
 Type In or Select One

- Forward
- Reverse
- Combined
- Buff



Item	3L-7L:18L-18R	8L-12L:18L-18R	13L-17L:18L-18R	18L-18R:17R-13R	18L-18R:12R-8R	18L-18R:7R-3R
Description	Outside Track:Middle	Middle Track:Middle	Inside Track:Middle	Middle: Inside Track	Middle:Middle Track	Middle:Outside Track
Track Zone Ratio	8.75	2.02	1.04	1.04	2.02	8.75

